



Hello, I'm
3PR

Help improve parking around John Ray Infant & Junior Schools

The school, pupils and 3PR are trying to reduce the amount of traffic and congestion that often builds up around the school during busy drop off and pick up times. In addition, vehicles parked with wheels up on the pavement can create an obstruction and present a challenge for pedestrians, including children and buggies, trying to get past.

Notley Road on which the main entrance of the schools are situated is a busy residential road. If parking in the area, avoid parking over driveways, on the pavement, in front of garages, on grass verges, on the parking restrictions and on bends and ensure you park with 'Care, Consideration & Caution'.

The school and its pupils feel that something needs to be done, so they are asking for the full support of parents and carers to help improve the situation.

Where possible it is always best to avoid coming to school by vehicle however, those of you who have to be dropped off by vehicle with no alternative to walk scoot or cycle, need to park outside of the 3PR zones and follow the parking rules, to help safeguard the pupils at John Ray Infant & Junior Schools.

3PR has created a parking map, that shows the areas where we, the pupils at John Ray Infant & Junior Schools would like to highlight as areas of concern.

Also shown on the map are the 3PR zones created outside and behind the school. Please do not park, drop off or pick up in these zones. Any pupil that walks, Scoots or cycles into the 3PR zone will receive a token which will be put into their class token box, the class with the most tokens at the end of term will receive the coveted "3PR Class Winners Trophy".



Remember the 3 parking rules or 3PR's

1 Care

- Be careful where you park
- Don't cause an obstruction
- Use a car park if available

2 Consideration

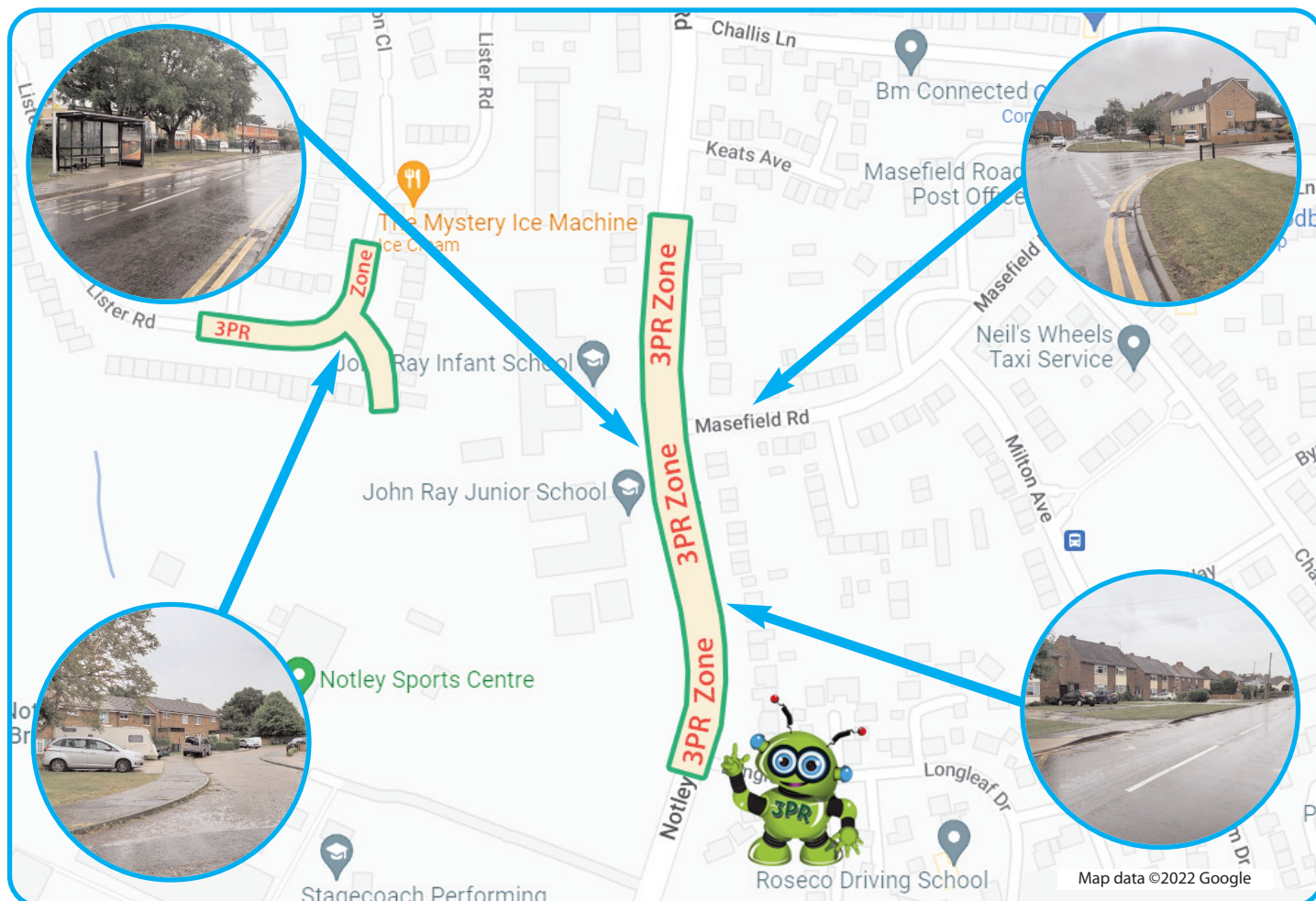
- Respect the school's parking policy
- Always consider the neighbours
- Don't block driveways
- Be polite and courteous
- If possible, walk or cycle instead

3 Caution

- Look out for other children, not just your own
- Always observe the speed limits
- Stay off the pavement



Below are some images of scenarios 3PR would like to highlight as areas to avoid



We would also like to ask you not to:

Double Park



Park on a Bend or Corner



Park over Driveways



Park on the Pavement



School Keep Clear Marking (Zig Zags)

Please do not stop or park on them during the hours stated (Monday to Friday 8:00 to 9:30am + 2:30 to 4:30 pm), the

restrictions are there to ensure the area is vehicle free and safe for pedestrians entering and exiting school.

3PR and the School Parking Initiative aims to encourage parents and carers, with encouragement from their children,

to reconsider how and where they park; *a few small changes in parking habits will make all the difference.*

Remember! Always use the 3 parking rules ('care, consideration and caution') when parking.

www.schoolparking.org.uk