

# Year 1

## September 2023

*Learning Together, Aiming High, Proud  
to be Ourselves*



# Welcome Back!

Year 1 is a really exciting year for your children. We do lots of exciting topics, and focus on lots of the basic skills your child will need, such as sentence writing, spelling and reading.

# School Day

Gates open – 8.35am

Doors open – 8.40am

Register at 8.45am

Doors close – 8.50am

If you arrive after 8.50 you will need to enter via the school office

## Afternoon

Gates open – 3.10pm

Doors open 3.15pm

# Core Values

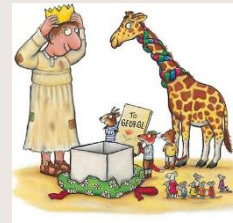
Respect



Responsibility



Curiosity



Caring

Honesty

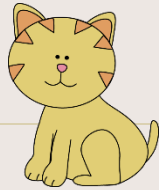


Fairness



Be Safe, Be Kind, Be Responsible

# Learning Spoons



## Concentrating Cat

I work hard and listen well.



## Cooperating Caterpillar

I work well with others.



## Persevering Pig

I never give up.



## Resilient Rabbit

When I make a mistake, I try again.



## Reflective Owl

I think about what I do and how I do it.

# Year Group Expectations



- 'Open door' policy.
- Please come and chat to us if you have a concern. If you have something you'd like to talk about in more detail, you can always book another time to catch up with us.
- Look out for Parent Mails and notices on the window.
- Please only bring bookbags, not rucksacks!



# Year Group Expectations

As parents and carers can we please ask you to

- Label all belongings
- Remove earrings on PE Days (Monday/Wednesday)
- No other jewellery to be worn in school
- Please come into school dressed in PE kit on Mondays/Wednesday
- This is white t-shirt, black/red joggers or shorts, red sweatshirt.
- Expectation of 30 mins per task for home learning – no longer. Will have homework books to complete this in. Due in on Wednesdays
- Mathletics – fun and easy to use maths program. Children have individual log in details. They can play games and engage in exciting mastery challenges.
- Children need to be responsible for their own belongings at end of day.



# Year Group Expectations

## Zones of Regulation

### Zones of Regulation

Blue Zone	Green Zone	Yellow Zone	Red Zone
			
Low	Happy	Wobbly	Angry
Running slow	Good to go	Caution	STOP!
Unhappy Tired Withdrawn Tearful	Positive Proud Calm Focused	Excited Nervous Frustrated Annoyed	Mad Furious Yelling Aggressive

Calm zone – children might be asked to sit and think about how to get themselves back to green.



# Curriculum

## Topics this year

- Brilliant Braintree – Finding all about the area we live in
- Pilots and transport
- Animals
- Olympians
  
- We will also be working lots on phonics, English (reading and writing) and Maths
- We will be going at the children's pace, spending longer on certain areas if needed
- Lots of our work will be practical and repeated to ensure understanding

# Reading



- Regular reading is essential.
- All children should be reading independently and fluently by the end of the year.
- We focus on decoding (sounding out the words) accurately, then re-reading to build up the fluency
- Regular practice of the same book will help this, so will re-reading very familiar books.
- In school your child will have the opportunity to read daily through whole class reading, guided reading and individual reading.
- Books will be changed in school on Monday and Thursday.
- Electronic books will be sent home weekly linked to learning at school.

# Reading



- Please keep reading at home this really does help your children to progress.
- Please ensure you sign the reading record when you have read with your child.
- This could include school books, books from home, comics, signs, listening to stories etc...
- We will have library books in class which the children will be able to change once a week as long as they return their previous book.

# Maths

- Emphasis on using models and images to support learning – using resources etc. Practical.
- Develop fluency in maths through revisiting often, practicing until it becomes habit.
- Using and applying – apply the skills they have learnt in problem solving and the mastery curriculum
- Move onto challenges to embed and extend learning.
- Making maths relevant to our everyday lives.
- We will recap things they did in FS to ensure a good foundation of learning before moving on.
- Mastering number to embed understanding of number.

# English

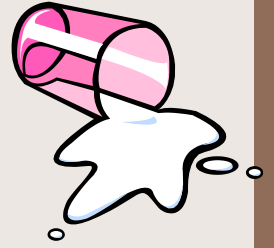


- Emphasis on basic skills of writing e.g. sentences, full stops, capital letters
- Handwriting – accurate letter formation, sitting on the lines
- Spelling – to recognise and try to spell common words in their work
- These skills are taught daily in school.
- Writing is taught creatively and through other subject areas e.g. Science.
- We will work with small groups to work on what the children need.

# Phonics Check

- Phonics Quiz! In June
- Low key, children carry out with the teacher, very similar to work we do in class
- Focuses on recognising sounds and blending them so lots of practice
- Results come out at the end of the year

# Healthy Schools



- Named water bottle in school all year – with water please not juice
- Asthma pumps labelled to teacher – Asthma Card (please collect from office)
- Any allergies let office know
- Give any medicines to the office with labels and instructions for giving
- Health Care Plans – please return if necessary
- If child has sickness/diarrhoea please allow 48 hours of being clear of symptoms before returning to school
- We do send children out in most weathers so please ensure they have appropriate coats with them



# Welcome to Year 1!

---

Dates coming up...

- Phonics Workshop
  - 18<sup>th</sup> October at 9.10